



Web Reference: <http://www.visionalyse.co.uk/products/wwwredirect>

Documentation

1. Windows Installation Instructions
2. IIS Setup Instructions
3. Set NTFS Permissions for ASPNET User Account
4. Testing
 - a. Accessing Web Administration Interface
 - b. Managing Rules
5. Backup and Restore

1. Windows Installation Instructions

Download Setup file "**WWW-Redirect-Setup.msi**" from Visionalyse website.

Once downloaded, double-click on the file to run the installation and get the installation wizard dialog (see figure 1).

Please note: Installation must be run on the server which will host the web application

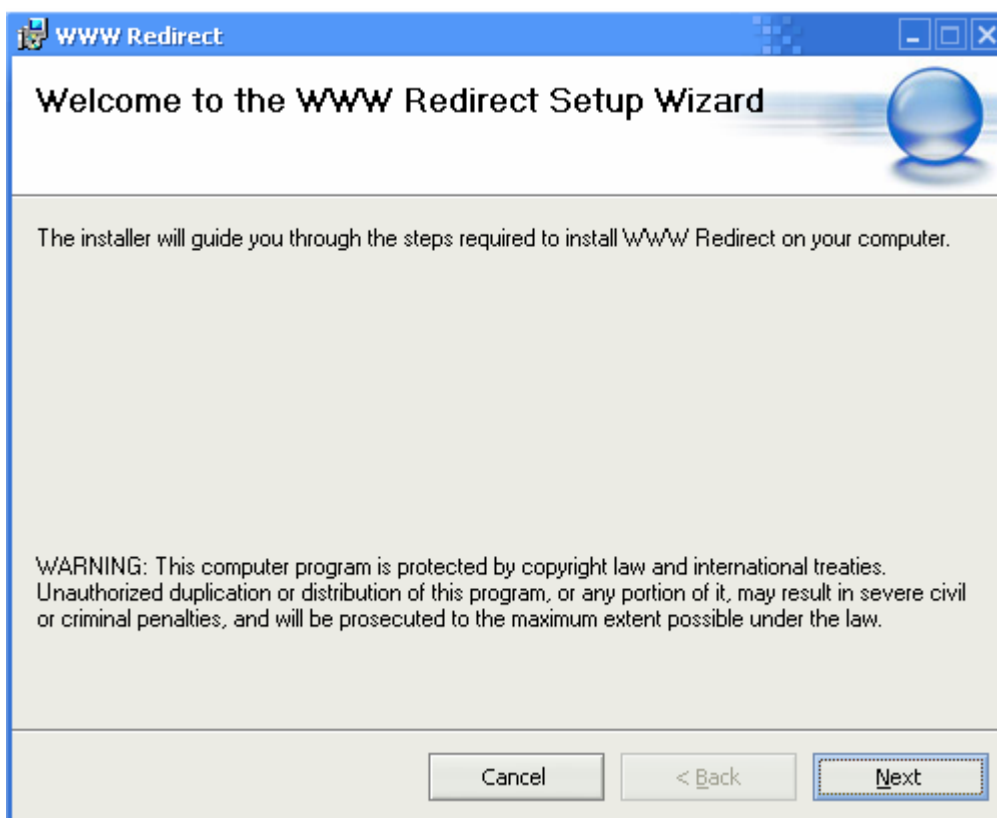


Figure 1 – Installation Setup Wizard



Press **"Next"** to continue, you will get prompted to select Installation folder location (see figure 2).

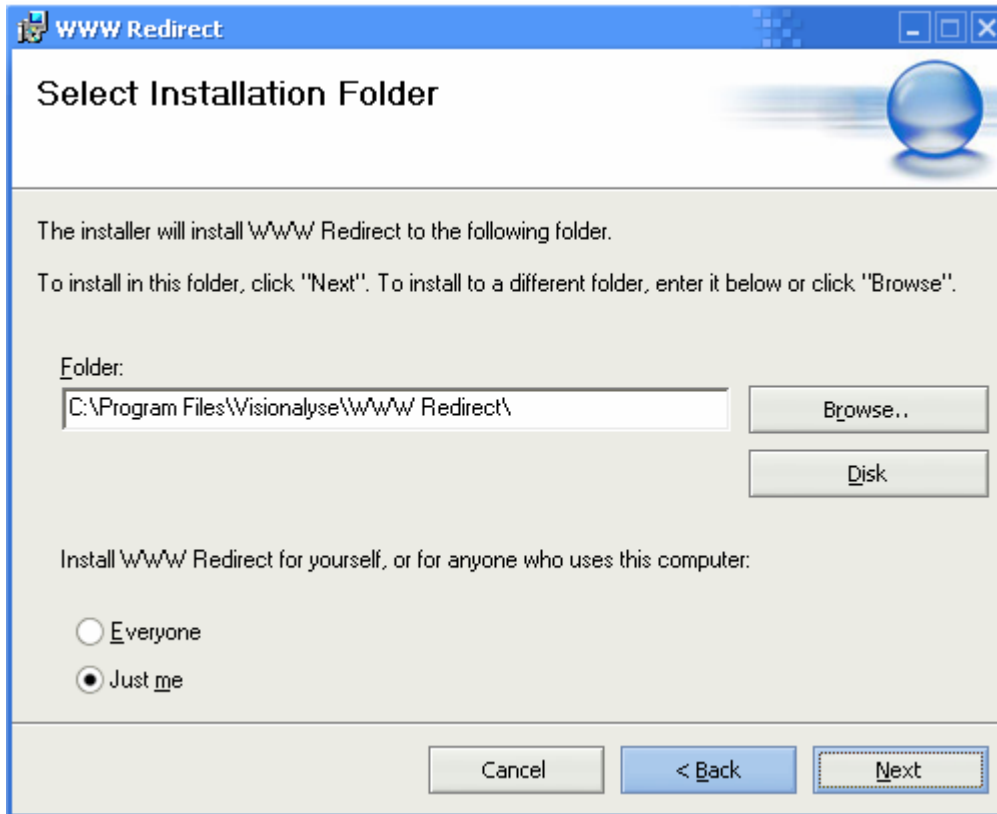


Figure 2 – Installation Folder Selection

Select a convenient folder location to install the web application by clicking **"Browse"** or entering a location manually in the textbox.

By default, the setup will install the application in the following location:
[program files]\Visionalyse\WWWRedirect

Press **"Next"** to continue, you will be prompted to confirm the installation (see figure 3).

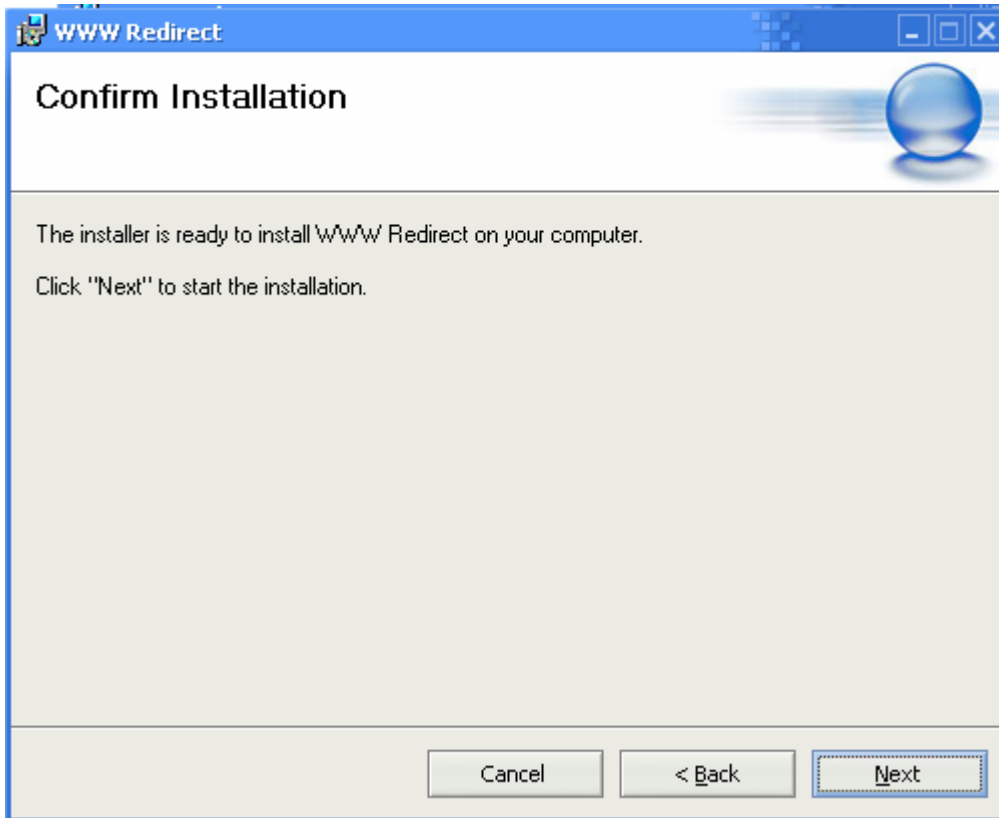


Figure 3 – Confirm Installation

Press **“Next”** to confirm the installation and the setup will install the required files in the chosen folder location.

Once the setup is finished, the message **“Installation Complete”** will be displayed on the screen (see figure 4)

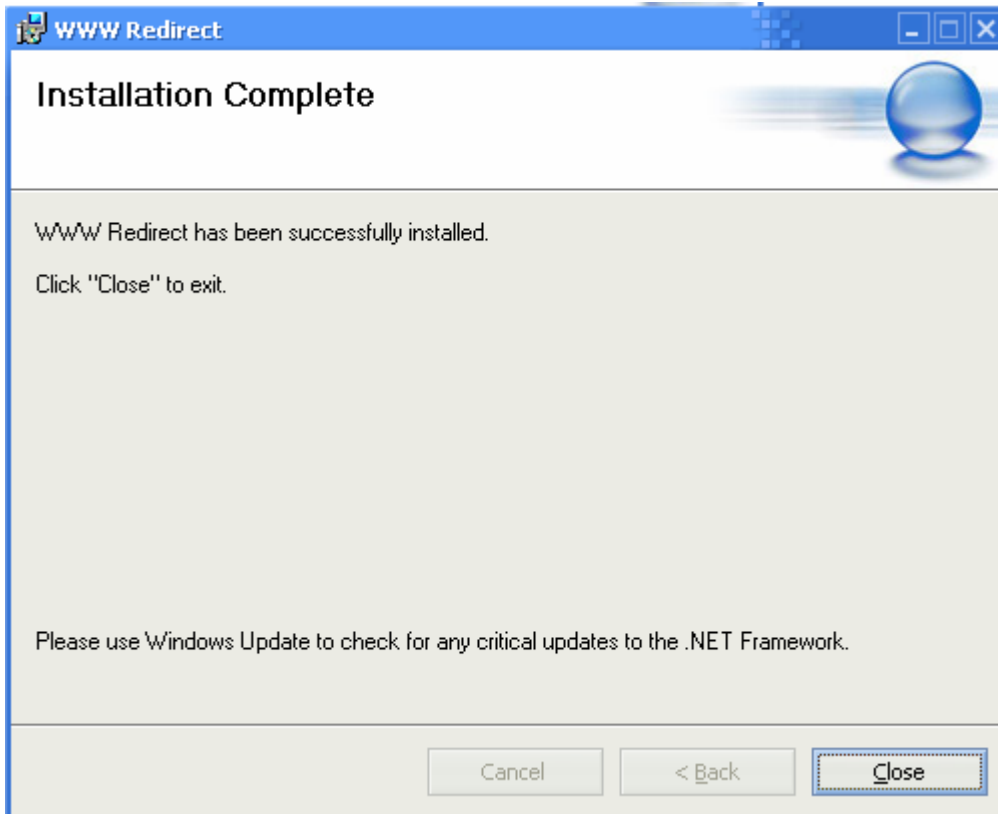


Figure 4 – Installation Complete

During the installation, the setup wizard has created a shortcut to **Web Administration Interface** on your Program Menu.

The shortcut was placed in the following location:

Start Menu → All Programs → Visionalyse → WWW Redirect → Web Administration

Next step: Proceed to IIS Setup Instructions to complete the installation.

2. IIS Setup Instructions

To allow **WWW Redirect** to process domain URL requests, you must set the web application as the “default web site”.

→ Open IIS Server

Before setting up the web application on the IIS server, please stop the current “default Web Site”.



Create IIS Web Application for WWW Redirect

Right-Click on "Web Sites" branch from the left tree and select "New" → "Website"

The setup wizard (see figure 1) will open.

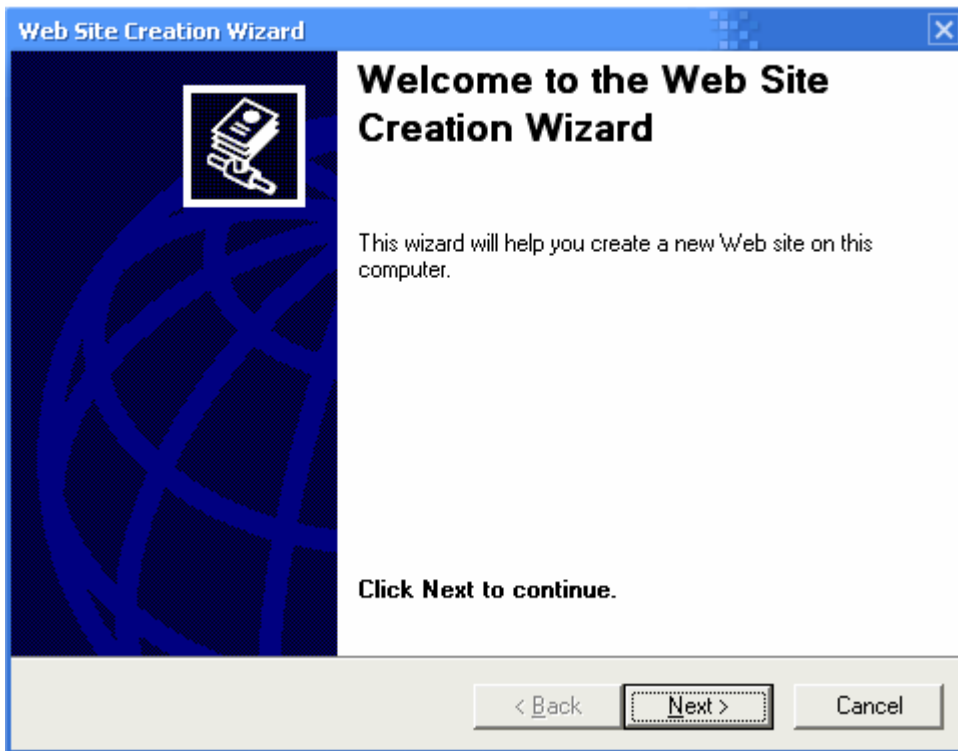


Figure 1 – Web Site Creation Wizard

Press "**Next**" to continue

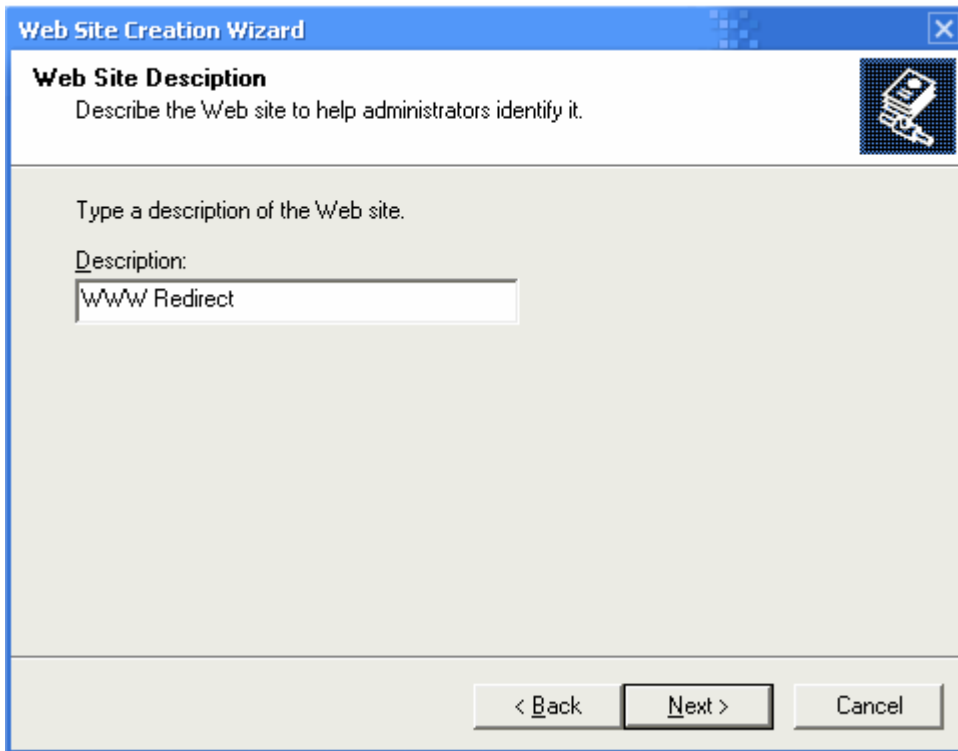


Figure 2 – Web Site Description

Enter the Web Application Name (i.e. WWW Redirect)
Press "**Next**" to continue



The screenshot shows a Windows-style dialog box titled "Web Site Creation Wizard" with a close button in the top right corner. The main title is "IP Address and Port Settings" and the subtitle is "Specify IP address and port settings for the new Web site." There is a small icon of a floppy disk with a checkmark in the top right of the main area. The form contains the following fields and labels:

- "Enter the IP address to use for this Web site:" followed by a dropdown menu showing "[All Unassigned]".
- "TCP port this web site should use: (Default: 80)" followed by a text box containing "80".
- "Host Header for this site: (Default: None)" followed by an empty text box.
- "SSL port this web site should use: (Default: 443)" followed by an empty text box.
- A note at the bottom: "For more information, see the IIS Documentation."
- At the bottom right, there are three buttons: "< Back", "Next >", and "Cancel".

Figure 3 – IP Address and Port Settings

Unless you want to run WWW Redirect on specific IP and Port Settings, leave these settings as it is on the figure 3.

Press "**Next**" to continue

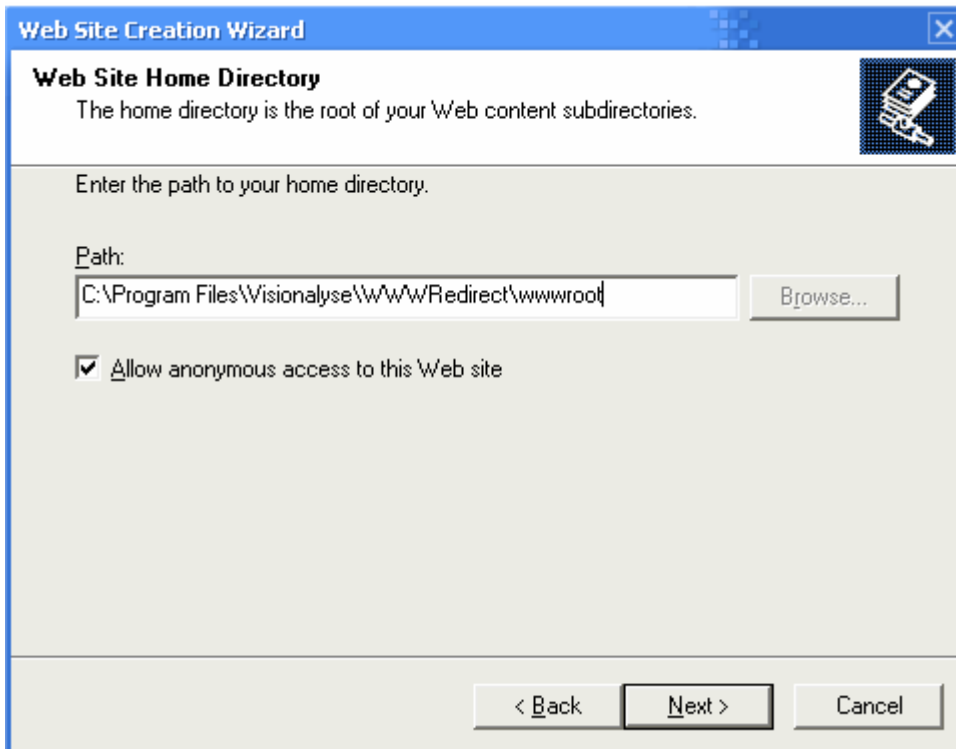


Figure 4 – Web Site Home Directory

Press “**Browse**” or enter the location of the **WWW Redirect** Web Application in the textbox.

If you haven’t changed the default installation location, this should be:

[program files]/Visionalyse/WWWRedirect/wwwroot

Press “**Next**” to continue

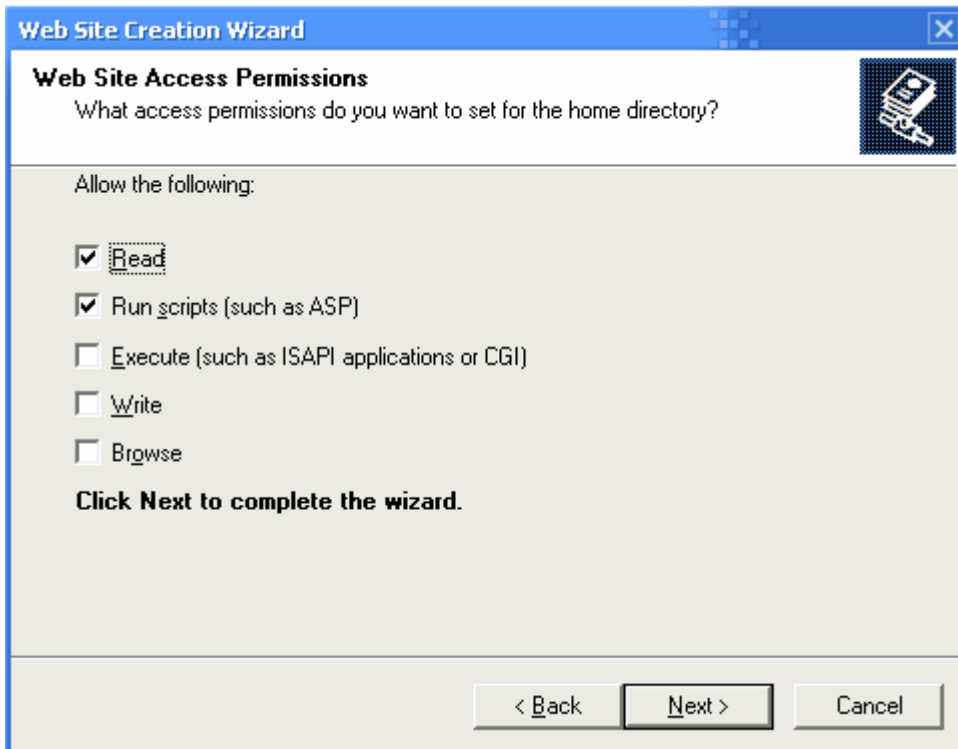


Figure 5 – Web Site Access Permissions

Leave permissions as it is on figure 5 and press “**Next**” to finish the installation.

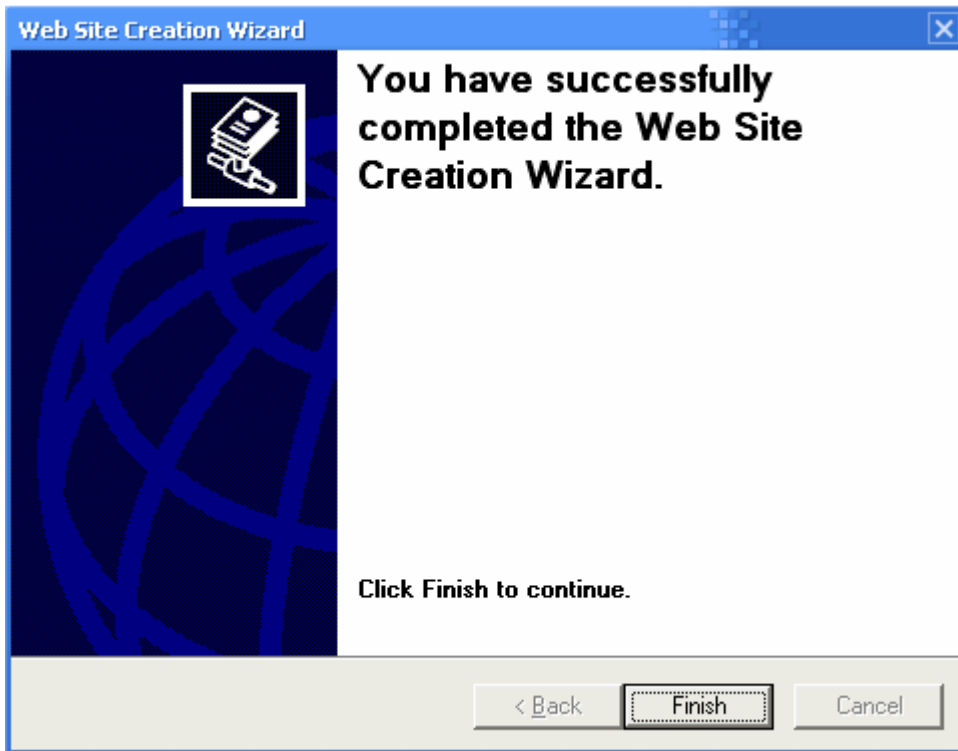
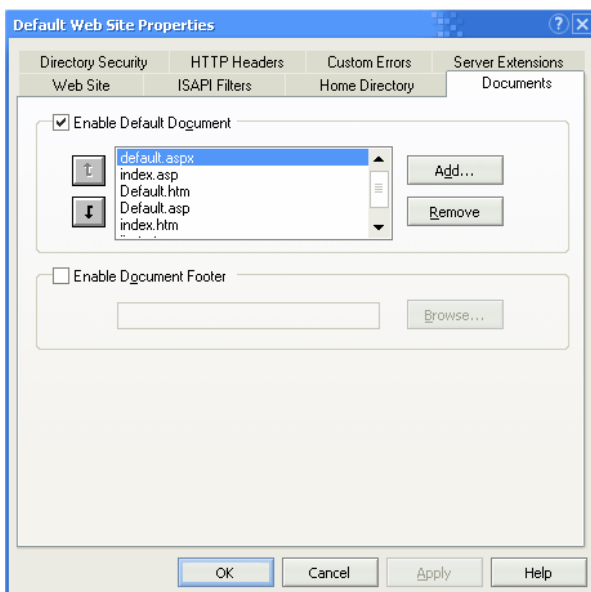


Figure 6 – Installation Complete

Once you have completed the installation, the following message will appear.

Note 1: Make sure the default document for the Web Site is enabled and “default.aspx” is included in the list of default documents





Note 2: Make sure “Integrated Windows Authentication” is checked under Directory Security/Authentication Methods.

Authentication Methods

Anonymous access
No user name/password required to access this resource.
Account used for anonymous access:
User name:
Password:
 Allow IIS to control password

Authenticated access
For the following authentication methods, user name and password are required when
- anonymous access is disabled, or
- access is restricted using NTFS access control lists

Digest authentication for Windows domain servers
 Basic authentication (password is sent in clear text)

Default domain:
Realm:

Integrated Windows authentication



3. Set NTFS Permissions

To be able to modify your configuration using the Web Interface, you must allow the ASPNET Machine Account to read/write the Web Application Folder.

Open Windows Explorer and browse to Web Application folder called "wwwroot".

Right-Click and select "Properties". Select "Security" Tab from the properties dialog (see figure 1)

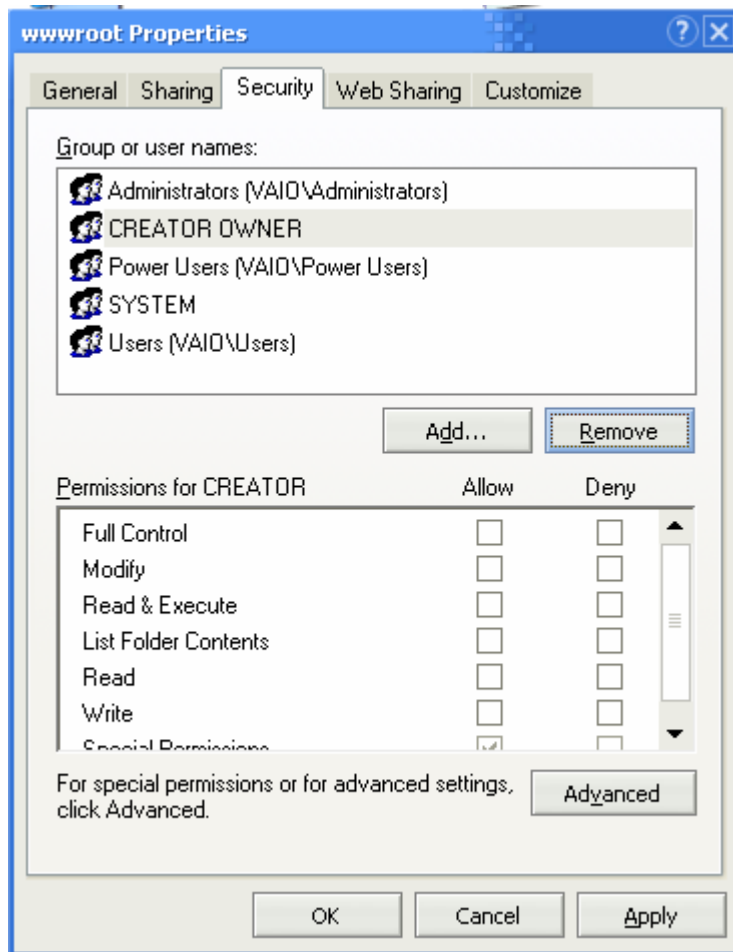


Figure 1 – Folder Properties Security Tab

Click "Add" button and the dialog to enter a user (see figure 2) will open.

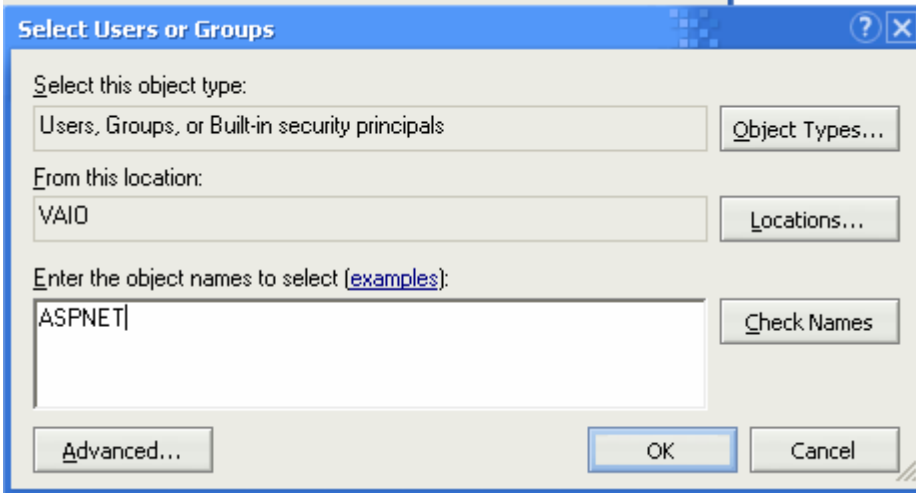


Figure 2 – Add a User

Enter your ASPNET Machine User Account. By default, this is ASPNET. Press “OK” to confirm and return to the “Security” Permissions.

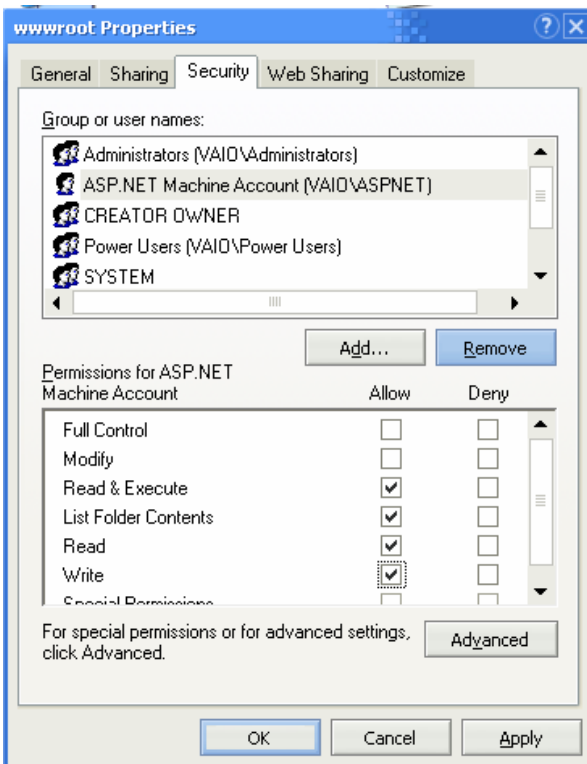


Figure 3 – ASPNET Security Permissions

Tick checkbox to allow “Write” Permission for ASPNET and make sure you have “Read” permissions checked (see figure 3).

Click “OK” to confirm and close the dialog.

You are now ready to access the Web Interface.



4. Testing

This product is licensed. If you are evaluating the product as a trial version and downloaded from Visionalyse Website, you have already a valid license.

This trial license allows you only to evaluate the product on **local host**. You can only access it using hostname **localhost** or IP **127.0.0.1**.

To request a **fully working license**, please visit our website.

Accessing Web Administration Interface

The Web Administration Interface is secured using “**Windows Authentication**” and only users with **BUILTIN\Administrator** role can access it.

To change this configuration, edit the **Web.config** file located in the Web Application root folder.

Open Internet Browser and browse to <http://localhost/admin>

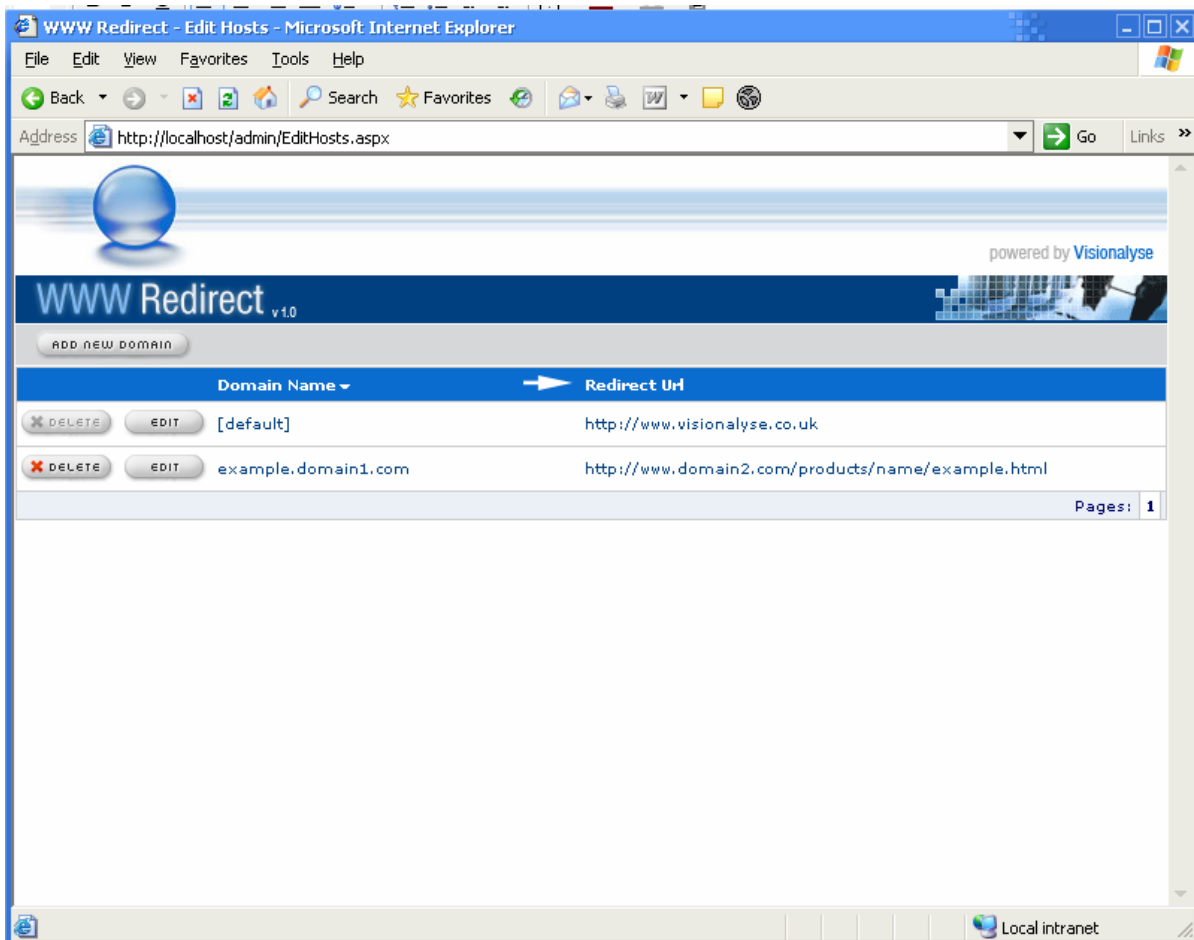


Figure 1 – Web Administration Interface



By default, you will see 2 records as example (see figure 1).

The domain name with the value set to **[default]** cannot be deleted and is used to redirect not defined rules or requests made using only the IP Address.

This configuration will redirect HTTP requests as follow:

<http://localhost> → <http://www.visionalyse.co.uk>
<http://127.0.0.1> → <http://www.visionalyse.co.uk>

Managing Rules

A rule allows you to redirect a HTTP request for a domain name to a URL.

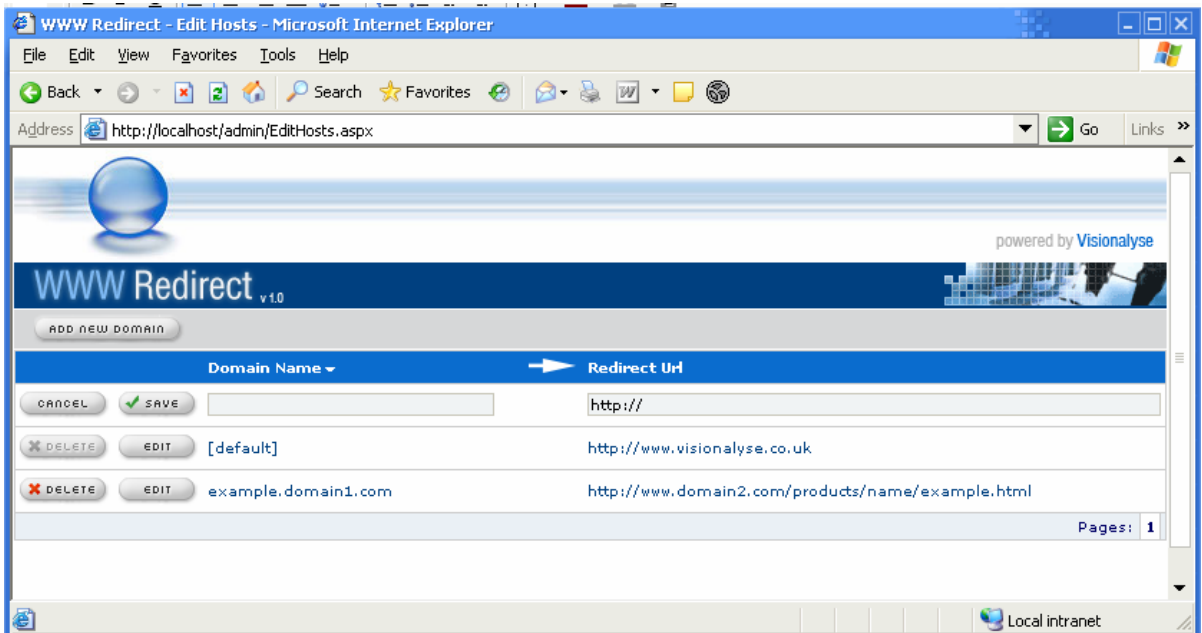
When creating a new rule, you must supply a domain name or sub-domain and the URL to redirect when the request is made.

Adding a Rule

Before you add a domain name to the list of rules, you must make sure the domain name IP is pointing to the same IP of the server running WWW Redirect.

Please refer to your Domain Name Provider to point your DNS to this server.

To add a rule, click on the button "Add New Domain" and a new table row will be showing with textboxes.



- Enter the domain name in the textbox under the column "Domain Name".

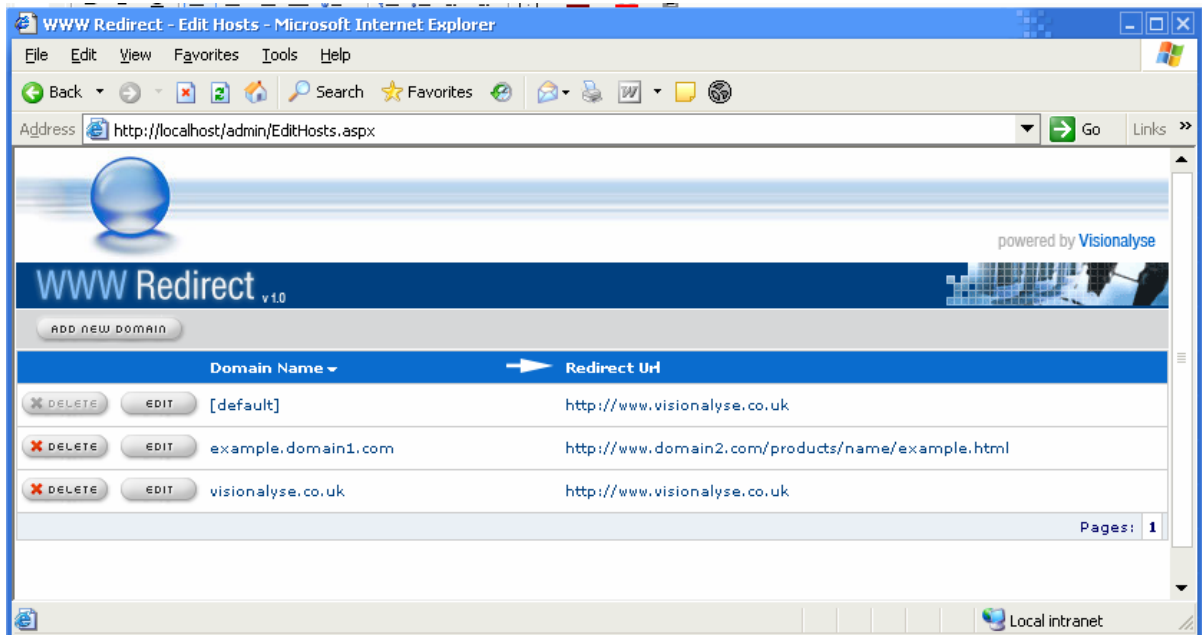
For example: **Visionalyse.co.uk**



- Enter the Redirect URL in the textbox under the column "Redirect Url"

For example: **http://www.visionalyse.co.uk**

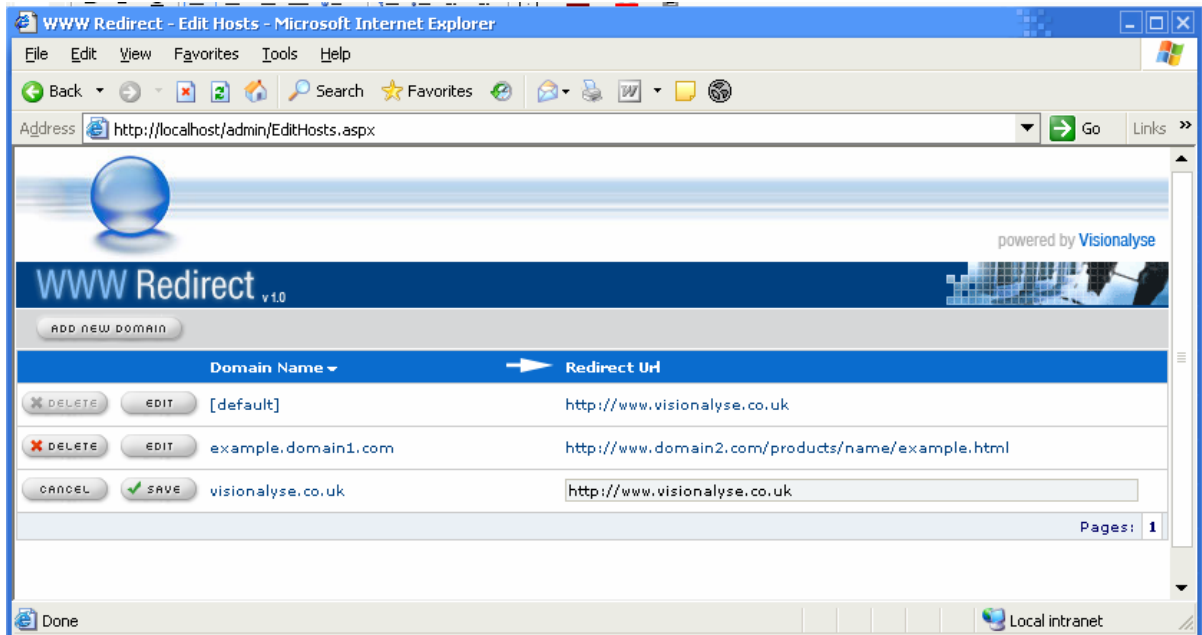
- Press "**Save**" button to save the changes and the page will display the newly added rule in the listing.



You can check the rule by clicking on the domain name hyperlink **Visionalyse.co.uk**. A new window should open to **http://visionalyse.co.uk** and WWW Redirect will instantly redirect the request to **http://www.visionalyse.co.uk**.

Editing a Rule

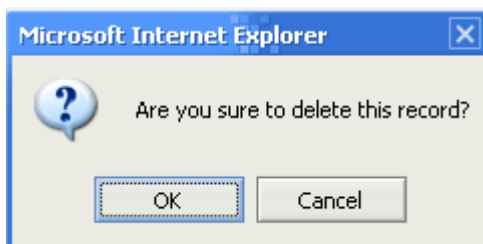
To edit an existing rule, press "**Edit**" button next to the rule you wish to edit and a textbox will be displayed in the "**Redirect Url**" column giving you the option to amend the URL.



Notes: Only the Redirect URL can be modified when editing a rule. If you wish to edit the domain name, you must delete the rule and create a new one with the new domain name.

Deleting a Rule

To delete a rule, press **Delete** button next to the rule you wish to delete and the following dialog box will appear and asking you to confirm the action.



To confirm the action, press **OK** and the rule will be removed from the listing.

To cancel the action, press **Cancel** and the dialog box will close without deleting the rule.



5. Backup and Restore

WWW Redirect use XML Dataset to store the information into an XML file, making easy the manipulation of the data.

By default, the configuration file is located in the root directory of the application and called **Hosts.config**.

For your convenience, you can change the location of this file by just moving it.

If you change the location of the **Hosts.config**, you will need to reconfigure the file location in the **Web.config** of the web application located in the root directory.

The configuration key is **XmlDatabaseUrl** under the **appSettings** Node. You can enter a Physical Path to the file (i.e. c:\Host.config) or a Virtual Path (i.e. ~/Hosts.config).

```
<?xml version="1.0" encoding="utf-8" ?>
<configuration>
  <system.web>
    <compilation defaultLanguage="vb" debug="false" />
    <customErrors mode="Off" />
    <authentication mode="Windows" />
    <authorization>
      <allow users="*" />
    </authorization>
    <trace enabled="false" requestLimit="10" pageOutput="false"
      traceMode="SortByTime" localOnly="true" />
    <sessionState
      mode="InProc"
      stateConnectionString="tcpip=127.0.0.1:42424"
      sqlConnectionString="data source=127.0.0.1;Trusted_Connection=yes"
      cookieless="false"
      timeout="20"
    />
    <globalization requestEncoding="utf-8" responseEncoding="utf-8" />
  </system.web>
  <appSettings>
    <add key="XmlDatabaseUrl" value="~/Hosts.config" />
    <add key="ErrorUrl" value="~/Error.htm" />
    <add key="LicenseInvalidUrl" value="~/LicenseInvalid.htm" />
  </appSettings>
</configuration> |
```



Backing up the configuration file

To backup the file, just make a copy of the file.

Restoring the configuration file

Locate and copy a previous backup file and overwrites the current file.
This will restore all the rules from the selected backup.